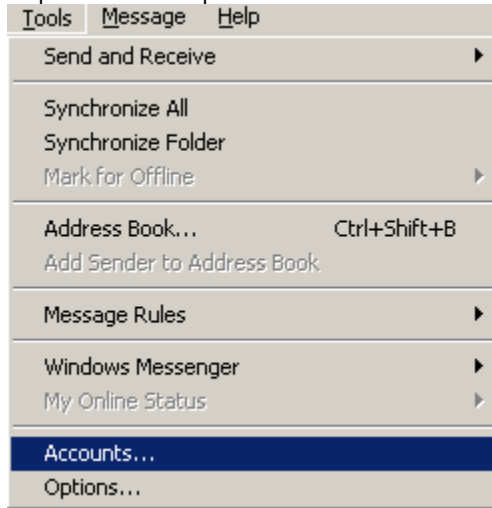
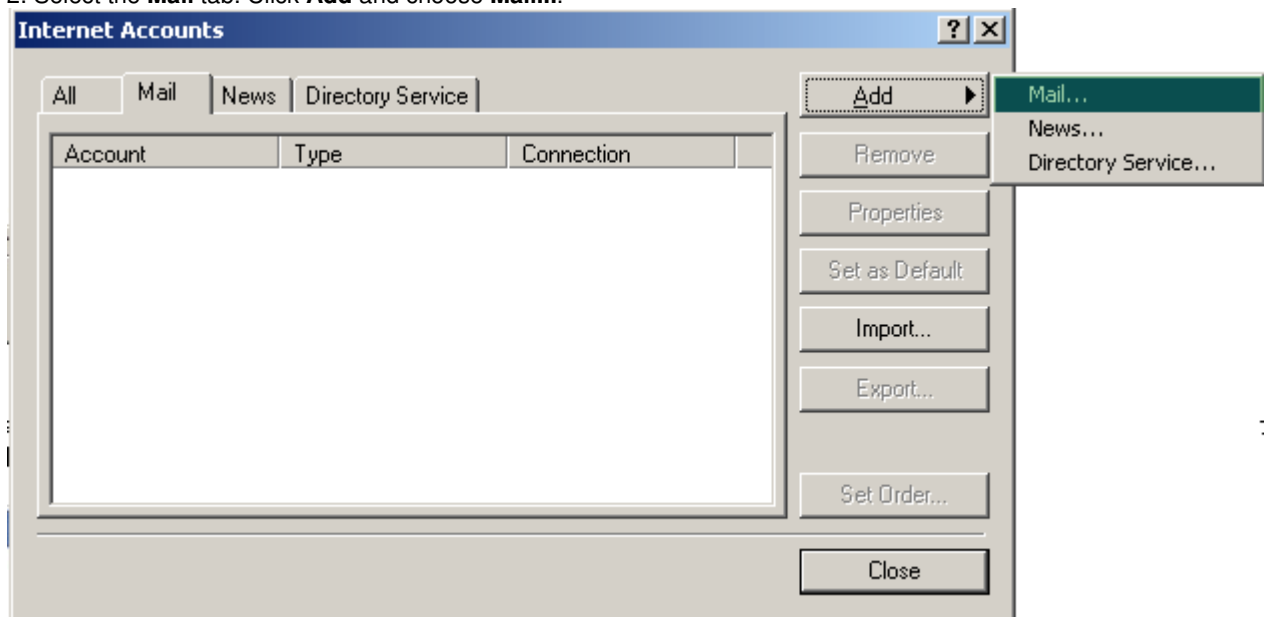


1. Open Outlook Express and click **Tools** and choose **Accounts**.



2. Select the **Mail** tab. Click **Add** and choose **Mail...**



3. Enter a Display Name and click **Next**.

Internet Connection Wizard [X]

Your Name

When you send e-mail, your name will appear in the From field of the outgoing message. Type your name as you would like it to appear.

Display name:

For example: John Smith

< Back **Next >** Cancel

4. Enter the e-mail address and click **Next**.

Internet Connection Wizard [X]

Internet E-mail Address

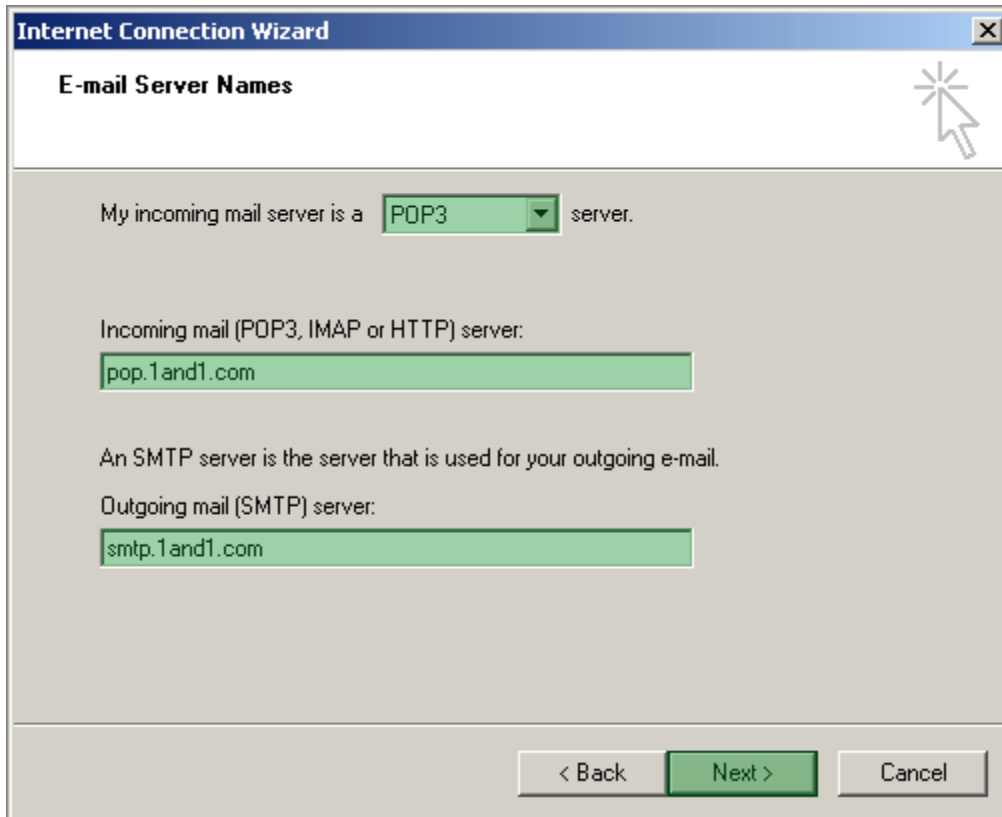
Your e-mail address is the address other people use to send e-mail messages to you.

E-mail address:

For example: someone@microsoft.com

< Back **Next >** Cancel

5. Choose **POP3** and enter the following:
Incoming mail: pop.1and1.com
Outgoing mail: smtp.1and1.com
and click **Next**.



The screenshot shows a window titled "Internet Connection Wizard" with a close button in the top right corner. The main title of the dialog is "E-mail Server Names". In the top right corner of the dialog area, there is a mouse cursor icon pointing at a starburst symbol. The dialog contains the following text and input fields:

My incoming mail server is a server.

Incoming mail (POP3, IMAP or HTTP) server:

An SMTP server is the server that is used for your outgoing e-mail.

Outgoing mail (SMTP) server:

At the bottom of the dialog, there are three buttons: "< Back", "Next >" (highlighted in green), and "Cancel".

6. Enter the e-mail address. If you want the system to remember the password, check the box near **Remember Password** and enter the password. Click **Next**.
(Note: Make sure the box near "Log on using Secure Password Authentication (SPA)" is Unchecked)

Internet Connection Wizard [X]

Internet Mail Logon

Type the account name and password your Internet service provider has given you.

Account name:

Password:

Remember password

If your Internet service provider requires you to use Secure Password Authentication (SPA) to access your mail account, select the 'Log On Using Secure Password Authentication (SPA)' check box.

Log on using Secure Password Authentication (SPA)

< Back **Next >** Cancel

7. Click **Finish**.

Internet Connection Wizard [X]

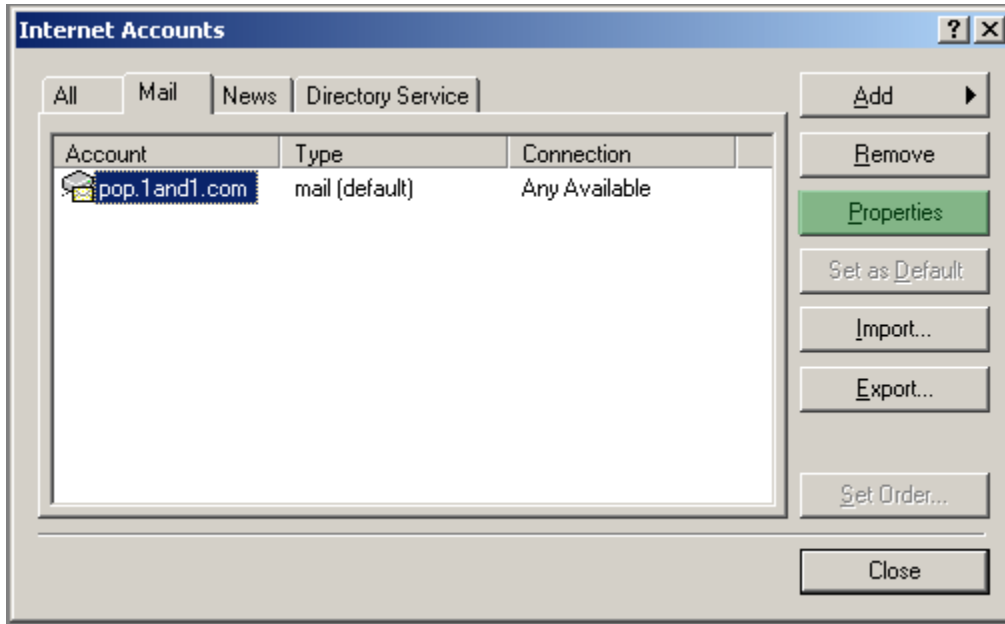
Congratulations

You have successfully entered all of the information required to set up your account.

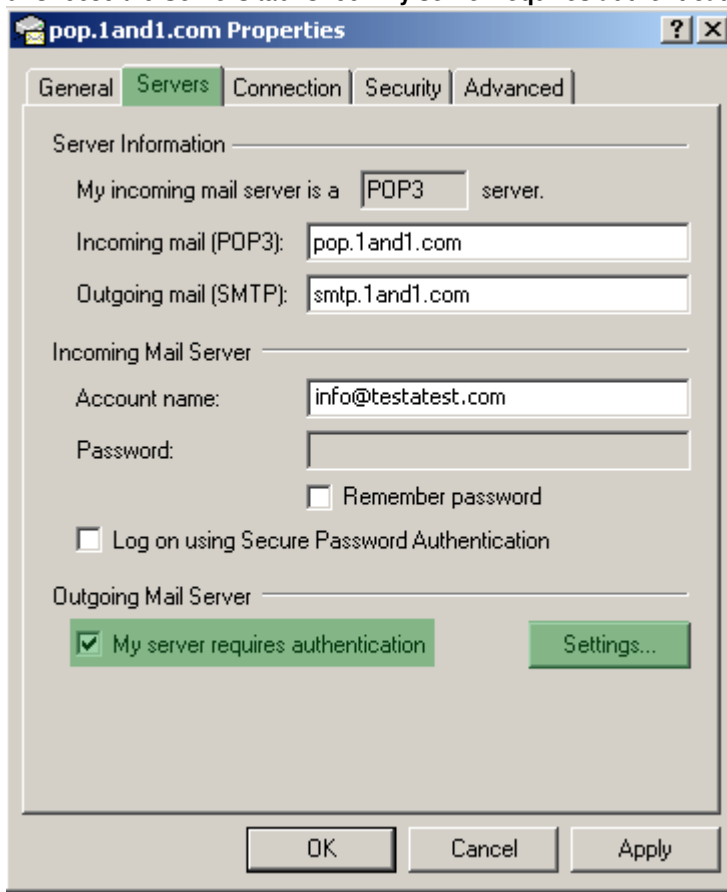
To save these settings, click Finish.

< Back **Finish** Cancel

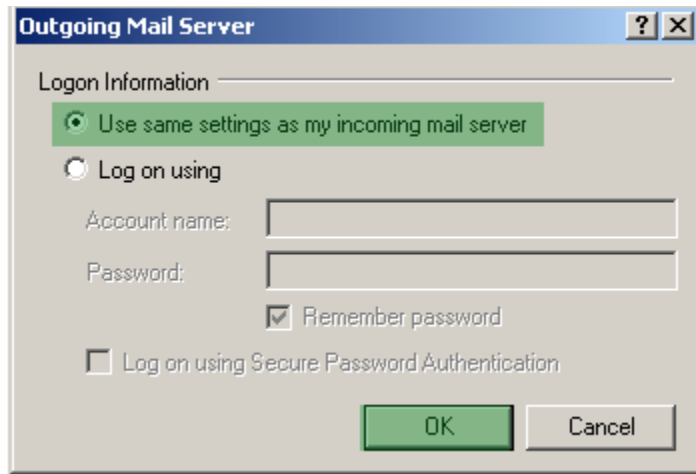
8. Now highlight the account and click on **Properties**.



9. Choose the **Servers** tab. Check **My server requires authentication**. Click **Settings**.



10. Choose **Use same settings as my incoming mail server** and click **OK**.



Click **Apply** and **OK** and close the **Internet Accounts** window.

IMPORTANT NOTE :

IF YOU EXPERIENCE ANY DIFFICULTY IN SENDING OR RECEIVING EMAILS IN OUTLOOK EXPRESS OR MICROSOFT OUTLOOK ,

YOU NEED TO CONTACT YOUR INTERNET SERVICE PROVIDER TO GET EXTERNAL SMTP PORT NO 25 OR 26 OR 587 TO BE OPENED